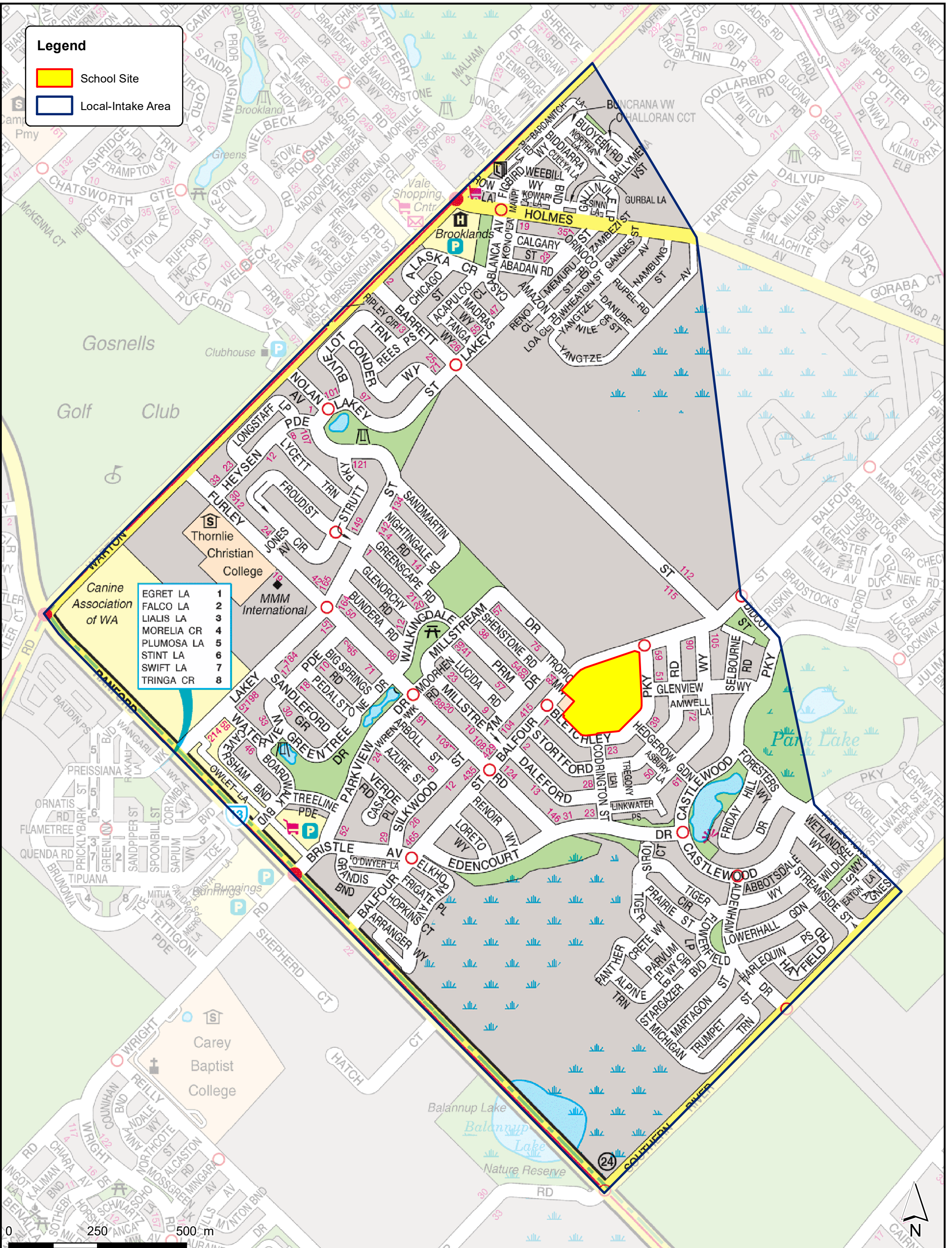


Legend

- School Site
- Local-Intake Area

- | | |
|------------|---|
| EGRET LA | 1 |
| FALCO LA | 2 |
| LIALIS LA | 3 |
| MORELIA CR | 4 |
| PLUMOSA LA | 5 |
| STINT LA | 6 |
| SWIFT LA | 7 |
| TRINGA CR | 8 |



This map is based on a written description of the local-intake area (LIA) for the school as published in the WA Government Gazette. Although the map closely represents the LIA description, for some houses near the boundary (especially on street corners), it may be necessary to refer to the written description. The street address of a residence is used to determine whether that dwelling is inside a particular LIA. The LIA description can be found in the Schools Online on the Department of Education website. While local-intake areas for most schools do not change from year to year, changes are made to local-intake areas as required. Such changes are published in the "WA Government Gazette" (usually in a December issue) and subsequently this map will be updated. For any enquiries contact Department of Education.

BLECHLEY PARK PRIMARY SCHOOL
 SCHOOL CODE - 5808
 Local-Intake Area boundary February 2020



V3.1
 Map created 21/02/2020 by Asset Planning and Services Branch, Department of Education WA
 S:\7352-Asset Services Apps\GIS\DOE GISMAPS\SchoolMaps\PRIMARY_SCHOOLS\BLECHLEY PARK PRIMARY SCHOOL V3.1.mxd